

Manufacturing

Grind Master Machines Pvt. Ltd.



Increased production rate, reduced cost structure and quick turnaround time.

Established in 1984, Grind Master Machines Pvt. Ltd. has been successfully manufacturing metal finishing and deburring machine tools for the last 33 years. Located in Aurangabad, Maharashtra, India, Grind Master specializes in Metal Finishing, Deburring, Microfinishing, and Robotic Automation. In addition to India, Grind Master has extended its footprint in China and has been serving customers across India, China, South East Asia, Europe, USA, and Middle East countries.

Committed with passion and dedication, Grind Master is consistently meeting and exceeding their customers' expectations. Over the years they have earned a well-positioned spot in the machine tool industry. With a workforce of 350, including 160 engineers Grind Master extensively believes in technology and development and is on a mission to become a global technology leader.

In 2013, Grind Master switched to EPLAN from AutoCAD to optimize their engineering processes. The transition from traditional CAD to EPLAN gave Grind Master a greater advantage in terms of increased production rate, reduced cost structure and quick turnaround time. The expert design and manufacturing team of Grind Master found EPLAN extremely convenient and reliable in providing quality engineering solutions.



PROCESS CONSULTING

ENGINEERING SOFTWARE

IMPLEMENTATION

GLOBAL SUPPORT

FRIEDHELM LOH GROUP



Electrical Engineering Design with EPLAN

Having recognized the huge opportunities, Grind Master migrated to two of the EPLAN products, which are EPLAN Electric P8 and EPLAN Fluid. With EPLAN, Grind Master was able to tackle time, which is actually the scarcest resource of all. A solid platform to work on, EPLAN Electric P8 is allowing Grind Master's engineers to easily document and manage every phase of their machinery project. EPLAN Electric P8, which is design software, is considered a potential choice by engineers for maintaining the reliability, functionality, and speed of a project.



Going with EPLAN Electric P8 & EPLAN Fluid - The future of electrical engineering

Every time a project reaches certain phase it is a natural thing to witness at least some percentage of variations from the actual requirement. Manually going through each element of the checklist will be time-consuming and unproductive. EPLAN Electric P8 at the press of a button will perform comprehensive check procedures with consistency and efficiency. Post product testing, the EPLAN software is designed to provide engineers with rapid revisions and corrections needed, which is actually a time-saving assistance when compared to the tedious manual procedures.

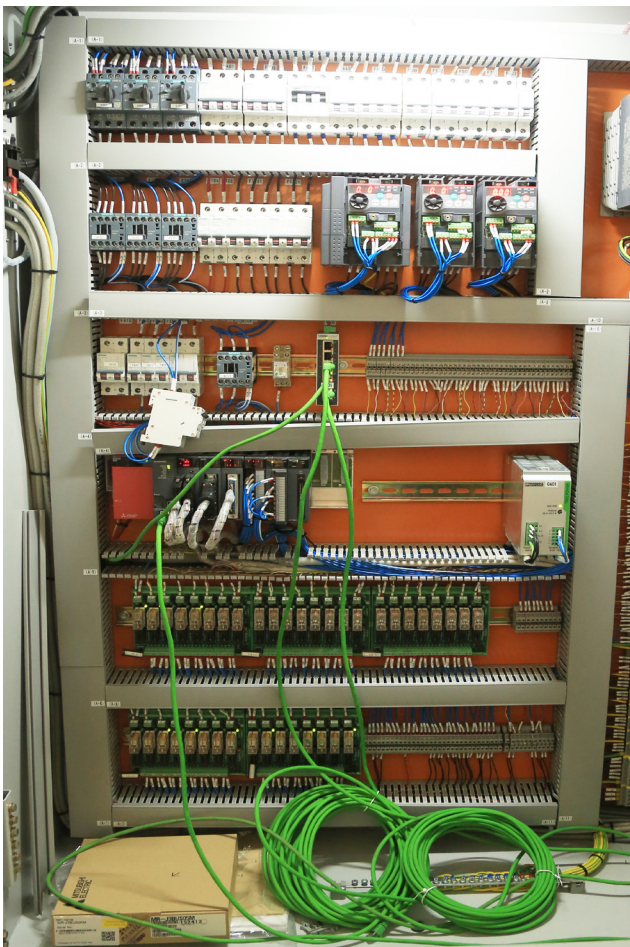
EPLAN Electric P8 is helping to make a difference. Through this sophisticated support, engineers are planning smartly to build with efficiency. Also, from the initial phase to the final one, say in between any one of these stages the wiring diagrams can be easily modified without any sort of performance degradation. A good amount of time can be conserved through the facility of automatic reports generation that includes BOM creation, terminal diagram, cable list, and cross-reference generation.

EPLAN Electric P8's compatibility with international standards such as IEC, NFPA, and Chinese GB standards has enabled Grind Master to easily collaborate with their global clients. With the advantage of Unicode compatibility feature, circuit diagrams, parts list, and other documentation are easily deployed worldwide. Grind Master on collaboration with EPLAN Electric P8 is supporting multi lingual database to achieve a broadened integration with clients.



On association with another product of the same platform, EPLAN Fluid, Grind Master's engineers are finding it easier to step up their fluid power engineering processes through the automated design generation and circuit documentation. EPLAN Fluid is an engineering tool that complies with current ISO standards while auto-generating the reports. The EPLAN platform through a standardized database is making it possible for engineers to maintain a direct communication between electrical, fluid power and electrical I&C engineering processes. Engineers at Grind Master saw a complete transition in the project life cycle on switching to the EPLAN platform.

The quick documentation and evaluation process is giving Grind Master a good chance to achieve their target with reduced engineering time while promising their clients with quick turnaround implementations.



The Transition Phase: Preparing for EPLAN

A team of 6 Engineers including 1 design engineer was trained to adopt EPLAN technology. On-spot support and guidance were provided to keep the team more comfortable about the new adoption. Members on board were trained completely to work on this new platform.

EPLAN is a valuable tool that has increased both efficiency and productivity in Grind Master. From the day they adopted this new technology, engineers at Grind Master are able to complete their tasks in a faster and better way.

Achieving Workflow Consistency



Prior to EPLAN, Grind Master had the consistency issues regarding GA, BOM, and schematic circuits. The advanced customization feature and superior documentation system helped engineers to dismiss the quality issues. Also, any requirement for design modification, the changes were easily bought in without affecting the production efficiency. Today, under EPLAN, complicated panels and schemes are being completed with less number of revisions.

The reduced processing time has increased the service efficiency of Grind Master. 'Consistency in engineering', time gain, increased quality, flexibility; the production rate of this company had a positive impact. The advantage of logical functioning and automated reporting has reduced the bottlenecks in the overall workflow. With proper terminal plans, cable schedules and interconnection diagrams the field service team is witnessing a smoother process. Fewer production delays, quick data modification, have enabled Grind master to provide accurate project quotes. Out of 10, Grind Master has rated EPLAN with 8 due to the efficiency gained in overall terms.

"EPLAN is very flexible software and it has helped us greatly in increasing productivity along with subsequent cost reduction"

- Sameer Kelkar, CEO and R&D Head

For more information about Grind Master Machines Pvt. Ltd, please visit www.grindmaster.co.in



EPLAN Software & Services Pvt. Ltd.
NCC Urban Windsor, 3rd Floor,
Opposite to Jakkur Aerodrome,
New Airport Road, Bangalore - 560 064
Phone: +91 80 33240700 · Fax: +91 80 33240741
Call us on :1800-3000-6066

EPLAN Software & Service GmbH & Co. KG
An der alten Ziegelei 2 · D-40789 Monheim am Rhein
Phone: + 49(0)2173 3964-0
Fax: + 49(0)2173 3964-25
E-Mail: info@eplan.de · www.eplan.de



PROCESS CONSULTING

ENGINEERING SOFTWARE

IMPLEMENTATION

GLOBAL SUPPORT

FRIEDHELM LOH GROUP